



FOR LEASE

2301 Stonehenge Drive | Raleigh NC

◆ SPACE AVAILABLE

Suite 102 +/- 914 RSF

- Reception
- Two Private Offices and Large Open Workspace
- Private Covered Entrance from Parking Lot

Suite 103 +/- 880 RSF

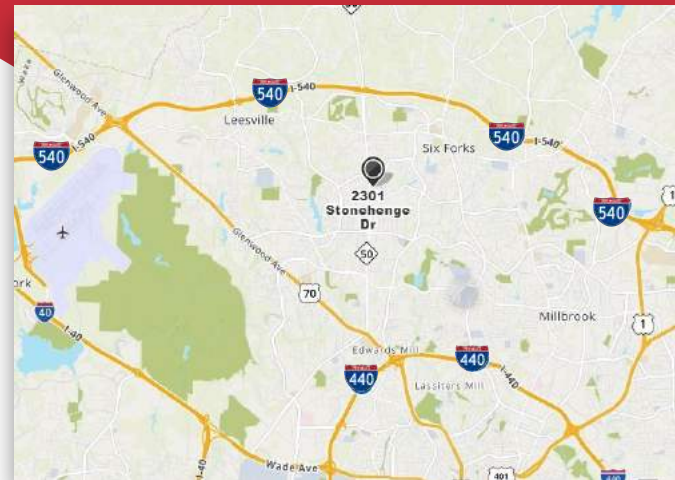
- Reception
- Large Open Office Area
- Two Entry/Exit Doors
- Large Windows Offering Natural Light

Suite 112 +/- 320 RSF

- One Large Internal Office

Suite 204 +/- 1,130 RSF

- Second Floor Suite (Handicap Accessible)
- Two Large Windowed Offices
- In-Suite Restroom
- Large Reception/Workspace
- Kitchenette, Storage, Copy Room



◆ RATE

\$17.00-\$20.00 PSF Modified Gross
(Tenant responsible for in-suite janitorial & voice/data)

◆ AMENITIES

- Close to Restaurants, Banks & Retail
- Handicap Accessible
- Parking Next to Building
- Minutes from I-540 & Major Traffic Corridors

FOR MORE INFORMATION CONTACT:

MIKE WILEN | SENIOR ADVISOR

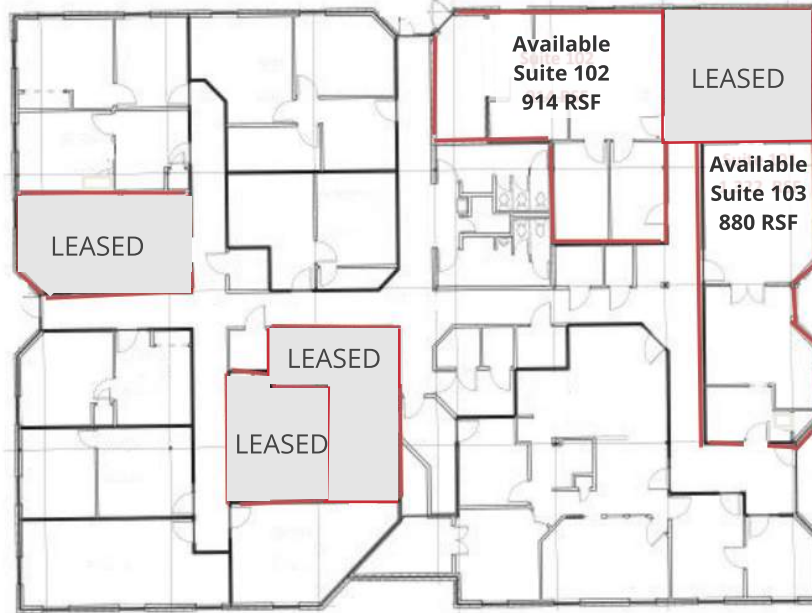
MWILEN@PHOENIXCOMMERCIALNC.COM

919.948.7268 (DIRECT) | 919.438.0934 (CELL)

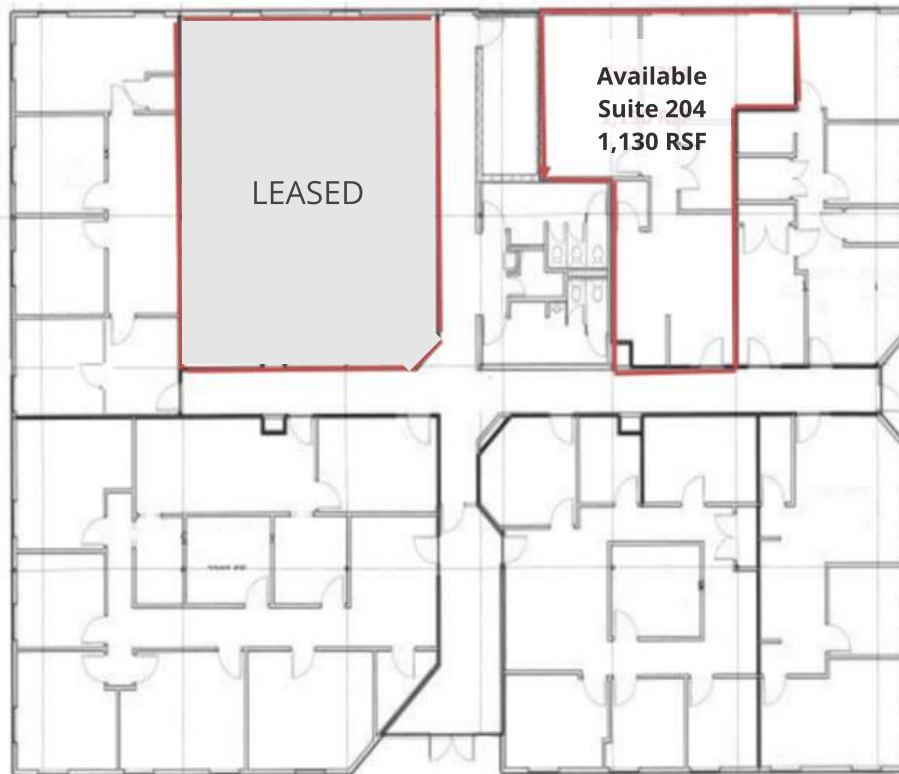
WWW.PHOENIXCOMMERCIALNC.COM | 919.896.6497

FOR LEASE

FLOOR PLAN



FIRST FLOOR



SECOND FLOOR



FOR LEASE

PHOTOS



FOR LEASE

PHOTOS



2301 STONEHENGE DRIVE | RALEIGH NC 27615

FOR LEASE



DEMOGRAPHICS	1 MILES	3 MILES
POPULATION	11,376	84,838
PROJECTED POPULATION (5 YRS)	INCREASE 10.1%	INCREASE 10.1%
AVERAGE HOUSEHOLD INCOME	\$85,927	\$78,458
HOUSEHOLDS	5,328	38,225

TRAFFIC COUNTS	TRAFFIC VOLUME	DISTANCE
CREEDMOOR RD & STONEHENGE DR. N	33,015	0.08 MILES
CREEDMOOR RD & STONEHENGE DR. S	25,800	0.10 MILES



We obtained the following information above from sources we believe to be reliable. However, we have not verified its accuracy and make no guarantee, warranty or representation about it. It is submitted subject to the possibility of errors, omissions, change of price, rental or other conditions, prior sale, lease or financing, or withdrawal without notice. We include projections, opinions, assumptions or estimates for example only, and they may not represent the current or future performance of the property. You and your tax and legal advisors should conduct your own investigation of the property and transaction.