



PHOENIX
COMMERCIAL PROPERTIES

For Lease

1020 Southhill Drive
Cary, NC



PROPERTY FEATURES

■ Space Description

Approximately 1,862 square feet of first floor, class A office space. Layout includes three offices, large bullpen area and personal restroom. Floor-to-ceiling windows cover two sides of the suite, allowing ample natural light.

■ Rate

\$2,950.00 per month. Modified Gross includes electric, water, heat and A/C utilities. Tenant pays janitorial, voice & data.

■ Tenancy

Vacant. Available immediately.

■ Zoning

OI - Office and Institutional

■ Parking

Ample parking surrounds the exterior of the building with three entrances to the building. No reserved parking.

■ Signage

The tenant may affix lobby signage; and exterior directory signage is also available.

All Showings By Appointment Only

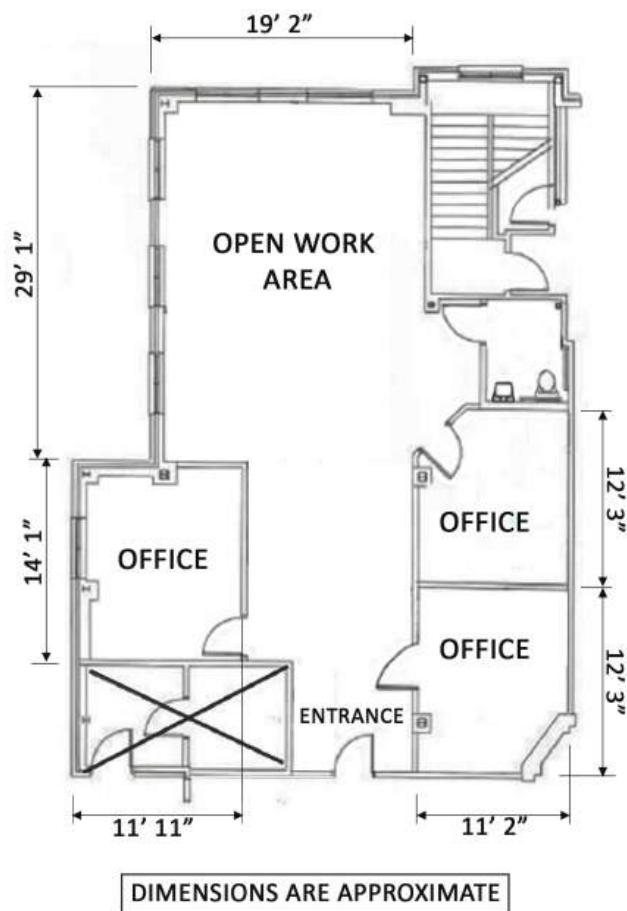
For more information contact:

PHOENIX
COMMERCIAL PROPERTIES

Thomas Goodwin | Advisor
919.896.6497 x4 | 919.227.9943 (cell)
Thomas@phoenixcommercialinc.com

309 WEST MILLBROOK ROAD SUITE 141 | RALEIGH NC 27609 | 919.896.6497 | www.phoenixcommercialinc.com

Interior Layout & Features



■ Space/Use

The space can accommodate a wide variety of professional office users. Neighboring tenants within the building include attorneys, doctors, a communication company and other business services.

■ Building Description

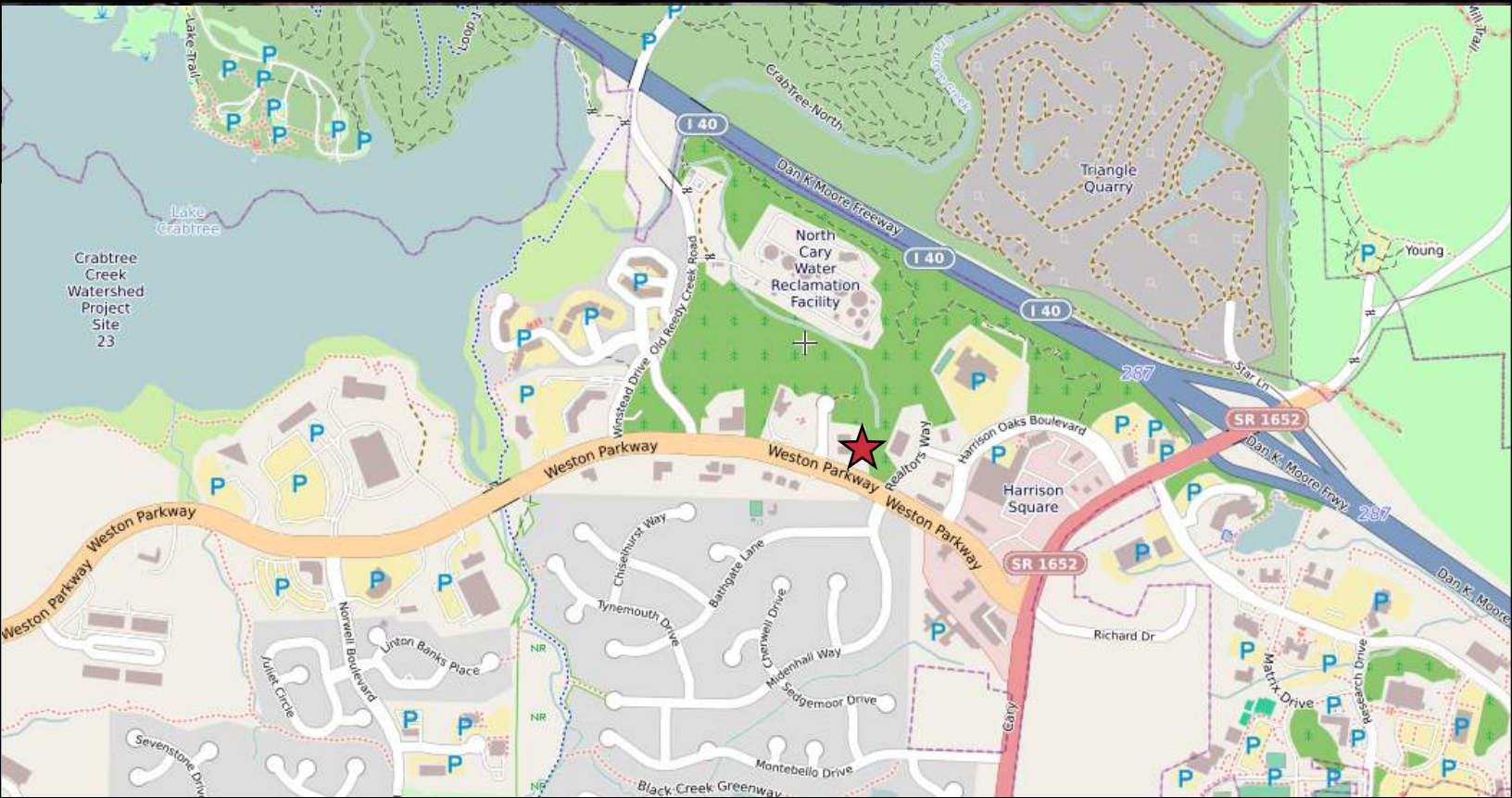
Originally built in 2000, this class A office condominium building is brick & steel construction rising three stories. The front entrance of the building faces Weston Parkway with two other buildings on the North and East sides.

■ Location

The property is located on Southill Drive directly off of Weston Parkway in Cary. Easy access to I-40 and RDU International. Nearby amenities include restaurants, banks, hotels and retail stores making it a desirable location for any user.



Aerial and Maps



The information contained herein was obtained from sources believed reliable; however, Phoenix Commercial Properties, LLC makes no guarantees, warranties, or representations as to the completeness or accuracy thereof. The presentation of this property submitted is subject to errors, omissions, changes of price or conditions prior to sale or lease, or withdrawal without notices.